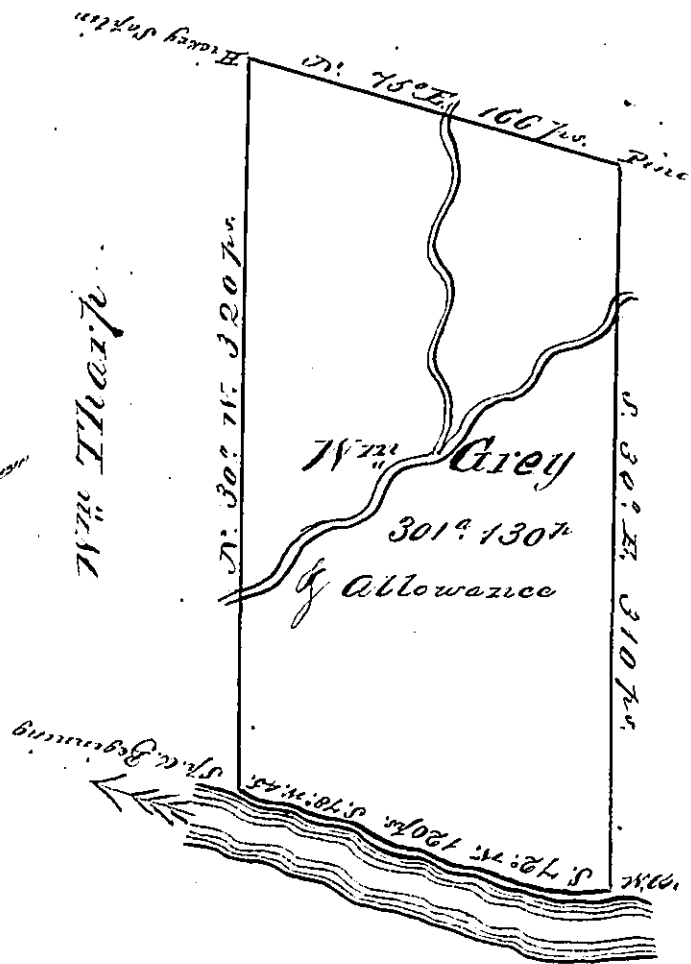


B. 1192



David Chambers

A Draught of a Tract of Land called Raplan
 Situate on the westerly side of the North East Branch
 of Susquehanna River about five miles up stream
 from the mouth of Fishing Creek in Northampton
 County containing three hundred and ~~two~~ one acres
 and one hundred & thirty perches besides the
 usual allowance of 6 ft. Cent for Roads,

Surveyed the 15th September 1769 for Wm
 Grey in pursuance of an order dated the
 28th day of August 1769 No. 3787.

To John Lukens Esq^r }
 Survey^r General } by Chas. Stewart Esq^r Sur^v

IN TESTIMONY that the above is a copy of the original remaining on file in the
 Department of Internal Affairs of Pennsylvania, made con-
 formably to an Act of Assembly approved the 16th day of
 February, 1833, I have hereunto set my Hand and caused
 the Seal of said Department to be affixed at Harrisburg, this
 Twentieth day of February 1877

Wm. Candler
 Secretary of Internal Affairs